
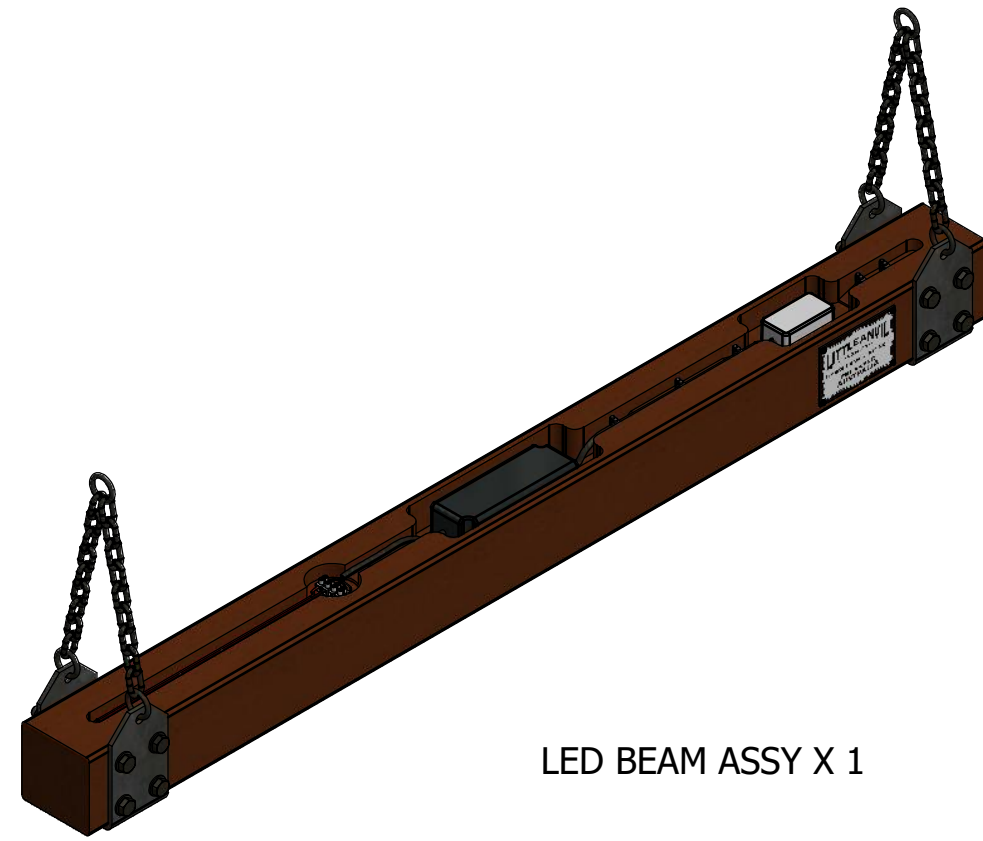


REVISION HISTORY				
REV	DESCRIPTION	DATE	APPROVED	CR
A	C0	19/12/2018	DG	
	B0	30/03/2018	DG	
	A1	19/01/2018	DG	
	A0	14/06/2017	DG	

USE ONLY FOR JOB NO.		Material		Finish	
UNCONTROLLED DOCUMENT		SCALE: DNS		© Little Anvil Co.	
		Designed by	Checked by	Approved by	Date
		DavidG		DG	14/07/2017
<small>Dimensions in millimetres Limit on untoleranced unmachined dimensions ± 0.2mm No decimal place 1mm 1 decimal place ± 0.3mm 2 decimal places ± 0.1mm General unmachined angular tolerance ± 1° Tolerance to be non-cumulative</small>				Beam Assembly LED Dimmable	
				Revision	Sheet
				C0	1 / 4

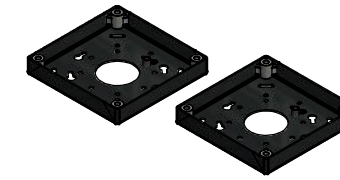
PARTS INVENTORY



LED BEAM ASSY X 1



CEILING CANOPY X 2



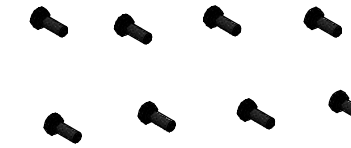
CEILING BACK PLATE X 2



ANTI-PULL-THROUGH X 2



CEILING CHAIN X 2



BOLTS M6 X 16mm X 8



WASHER M6 X 8



S HOOK X 4



CHAIN LINK X 2




CABLE CLIPS
LARGE X 4

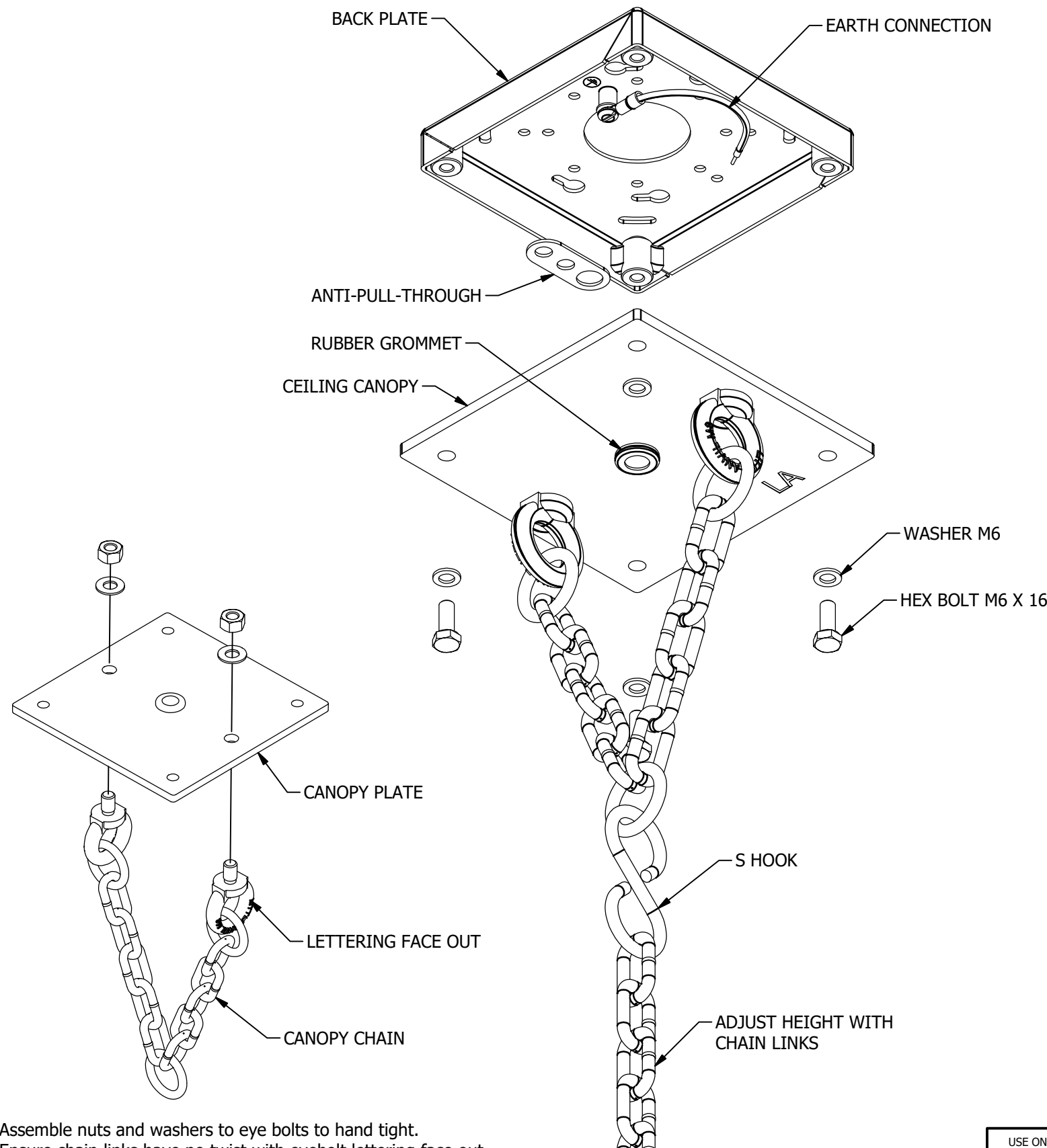


CABLE MAINS
SUPPLY X 1



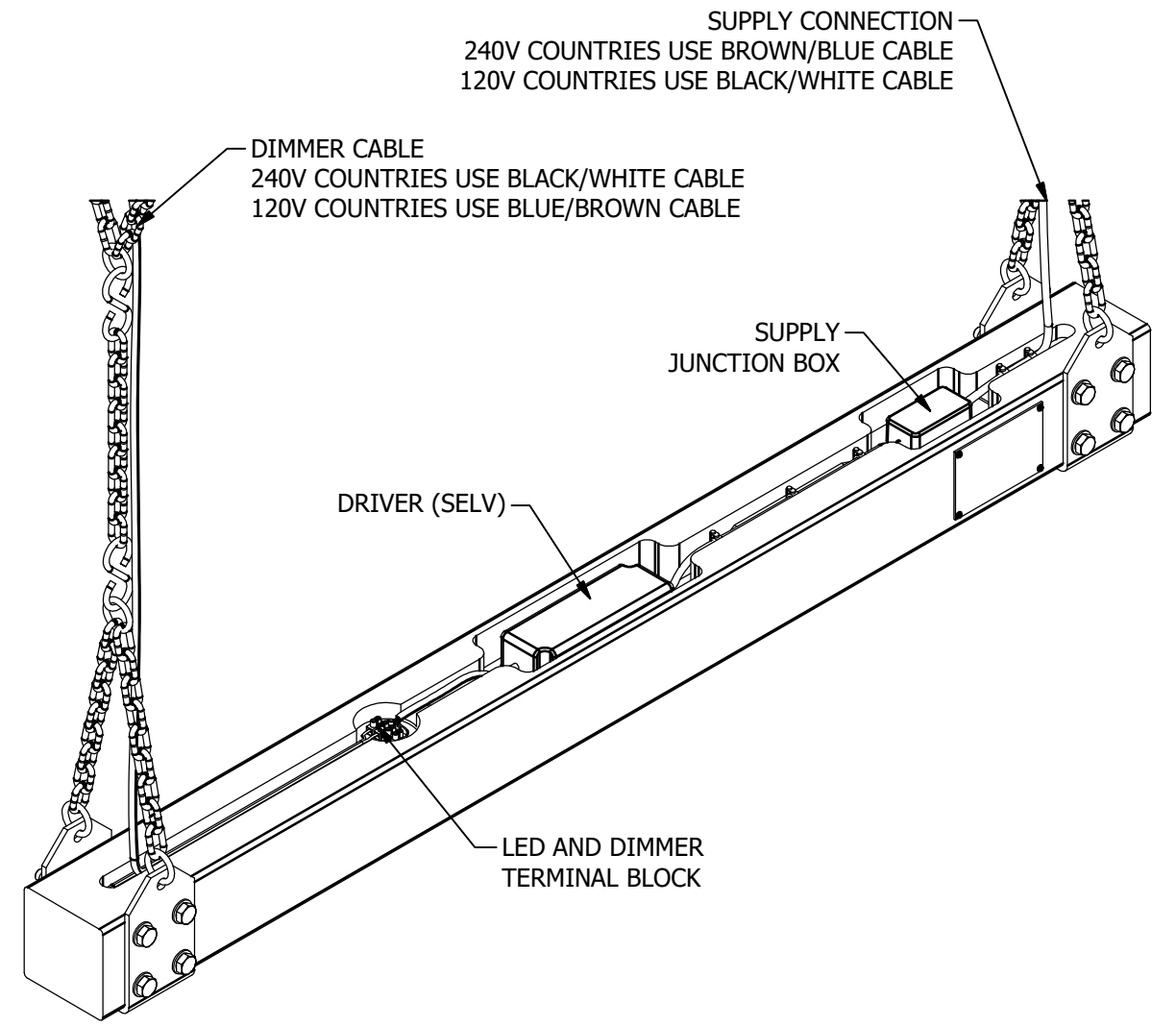
CABLE DIMMER
CONTROL X 1


USE ONLY FOR JOB NO.	Material	Finish	
UNCONTROLLED DOCUMENT	SCALE: DNS	© Little Anvil Co.	
	Designed by DavidG	Checked by	Approved by DG
	Dimensions in millimetres Limit on untoleranced unmachined dimensions ± 0.2mm No decimal place 1mm 1 decimal place ± 0.3mm 2 decimal places ± 0.1mm General unmachined angular tolerance ±1° Tolerance to be non-cumulative	Date	Project
	Beam Assembly LED Dimmable		Date 14/07/2017
	Revision C0	Sheet 2 / 4	



- Assemble nuts and washers to eye bolts to hand tight.
- Ensure chain links have no twist with eyebolt lettering face out.
- Tighten nuts whilst keeping eyebolts in position with a screwdriver through the eyebolt hole.

- Assemble ceiling canopy chains to ceiling canopy plates.
- Position and fix back plates to ceiling. Ensure adequate support (approx 16kgs/35lb).
- Fit cable into anti-pull-through to ensure terminal connections are protected from pull out.
- Terminate wire connections (mains one side, dimmer control the other) and leave cable hanging.
- Guide the ceiling plates over the cables via rubber grommets.
- Assemble ceiling canopies to back plates via 8 x M6 bolts and washers.
- Using the supplied S hooks, mount chain and light fitting. Height can be adjusted with chain links.
- The excess links can be cut and removed, or left hanging free.
- Run cables down chains as desired and into the chanel provided in the beam.
- Terminate connections via junction box (Mains) and terminal block (Dimmer) on beam,
- Use clips provided to hold cables in position in the channel.
- Test light and dimming functions.
- **WARNING:** The LED driver requires free air ventilation. Do not place any objects on top of the beam.



USE ONLY FOR JOB NO.	Material	Finish	
UNCONTROLLED DOCUMENT	SCALE: DNS	© Little Anvil Co.	
	Designed by DavidG	Checked by DG	Approved by Date Project Date 14/07/2017
	Dimensions in millimetres Limit on untoleranced unmachined dimensions ± 0.2mm No decimal place 1mm 1 decimal place ± 0.3mm 2 decimal places ± 0.1mm General unmachined angular tolerance ±1° Tolerance to be non-cumulative		Beam Assembly LED Dimmable Revision C0 Sheet 3 / 4

DESCRIPTION:

Timber LED Beam Light No. 1 with remote dimming connection.
 Designed and hand crafted in Australia.
 Indoor use only.
 Input Voltage: 240VAC 50HZ (eg. AUS, UK, NZ) or 120VAC 60Hz (eg. US, CA).

LED Driver: Mean Well PWM-40
 Rated Wattage (LED Driver): 40W
 SAA, CE, UL

Driver output:

LED Power: Constant Voltage 12V or 24V Red +ve, Black -ve
 Dimming: Blue +ve White -ve

DIMMING:

There are three available modes of dimming. The driver will automatically detect the mode used.
 1. 0-10VDC Potentiometer/dimmer control. - (Suggested SDF30 from ADM Instrument Engineering)
 2. 10V PWM signal - frequency range 100Hz ~ 3KHz.
 3. Resistive - 100K Potentiometer. (Only suitable for dimming a single light fitting/driver.)
 Please refer to the provided LED Driver data sheet for more information.

If no dimmer is fitted the LED will display at full brightness.

DALI:

DALI control is possible with the addition of a DALI to PWM Converter 'Mean Well DAP-04-S01DM'.

PUSH BUTTON SWITCHING & DIMMING:

The DAP-04-S01DM module can accommodate a single momentary push button to control dimming and mains-side switching functions.
 Up to 20 light fittings can be controlled with one push button.
 Refer to the DAP-040S01DM data sheet for more information.

NOTE: It is always recommended to switch the light off from the source, rather than leaving the dimmer turned all the way down.
 Please consult with your electrician for more information.

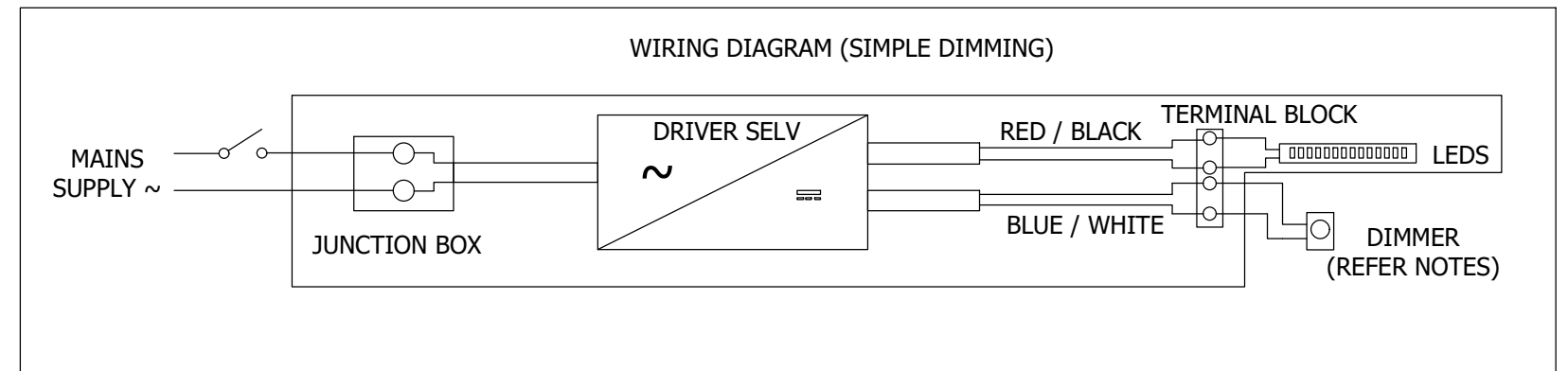
SPECIFICATIONS:

LED: SMD2835 strip. 24V 30,000Hrs
 Light Output: 2200lm
 Colour Temperature: Optional
 Cool White (6000K)
 Natural White (4000K)
 Warm White (3000K)
 Colour Rendition Index (CRI): >80

DIMENSIONS:

Width: 1200mm
 Height: 1500mm adjustable as standard, longer can be specified.
 Depth: ~ 130mm
 Weight: Approx 16kgs

All required lighting components come with either SAA, RCM for Australia and New Zealand, CE for Europe or UL listing for the US and Canada.



CAUTION!
 NEVER PLACE ITEMS
 ON THE TOP SURFACE
 OF THIS LIGHT FITTING

USE ONLY FOR JOB NO.	Material	Finish					
UNCONTROLLED DOCUMENT	SCALE: DNS					© Little Anvil Co.	
	Designed by DavidG	Checked by	Approved by DG	Date	Project	Date 14/07/2017	
	Dimensions in millimetres Limit on untoleranced unmachined dimensions ± 0.2mm No decimal place 1mm 1 decimal place ± 0.3mm 2 decimal places ± 0.1mm General unmachined angular tolerance ±1° Tolerance to be non-cumulative			Beam Assembly LED Dimmable			
						Revision C0	Sheet 4 / 4